

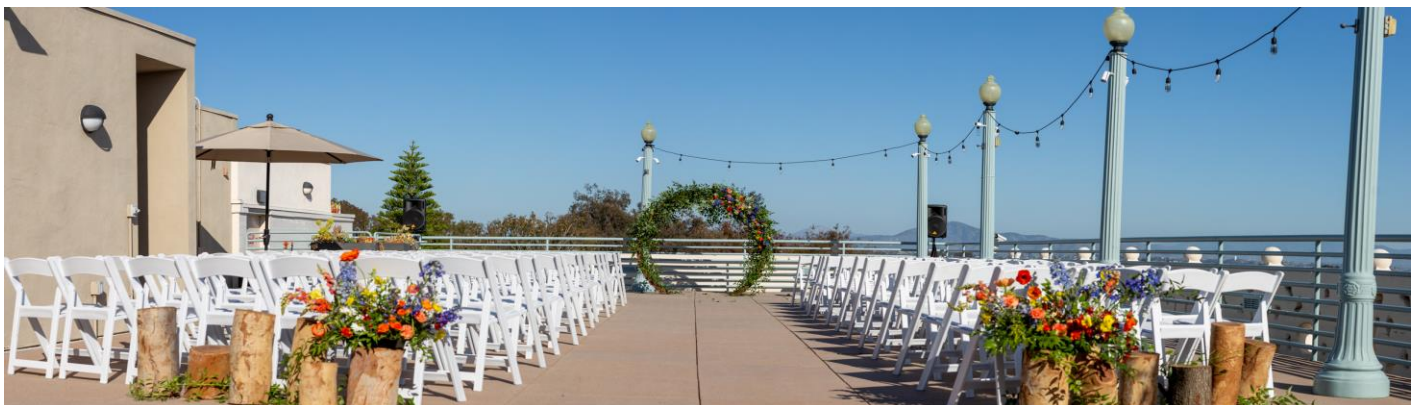
## The Nat | Special Events Equipment Rentals | 2023

Our extensive equipment rentals were hand-picked by our staff to help you craft your event. When selecting the SDNHM equipment package, all set-up and breakdown are included and completed by our staff.

Museum Equipment Packages		
<b>Package A:</b>	Includes access to all inventory items except for linens	<b>\$1,000.00</b>
<b>Package B:</b>	Includes up to 30 tables, 15 Belly Bars, 300 chairs except for linens	<b>\$700.00</b>
<b>Package C:</b>	Includes up to 20 tables, 10 Belly Bars, and 200 chairs except for linens	<b>\$600.00</b>
<b>Package D:</b>	Presentation equipment includes a stage, podium, and microphone	<b>\$400.00</b>

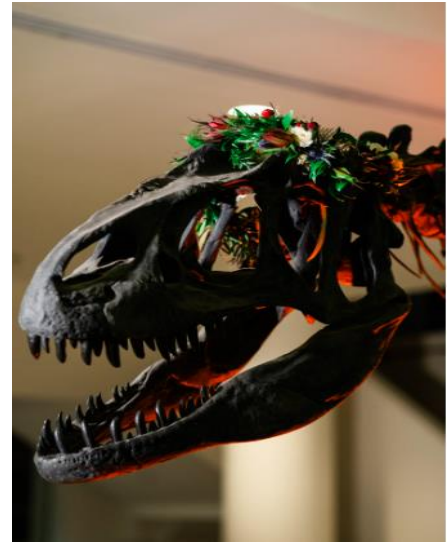
Size/Quantity	Item Description	Cost
<b>32ft</b>	Black Pipe or White Pipe & Drape	<b>\$600.00</b>
<b>(3)</b>	Patio Heater for Rooftop	<b>\$50.00 each</b>
<b>(5)</b>	Patio Umbrellas for Rooftop	<b>\$20.00 each</b>
<b>(13)</b>	24" Square Metal High-top tables	<b>\$15.00 each</b>
<b>(18)</b>	24" Round High-top tables	<b>\$10.00 each</b>
<b>(19)</b>	Square Metal Stools (For High-top tables)	<b>\$8.00 each</b>
<b>(13)</b>	6' Tables Plastic	<b>\$8.00 each</b>
<b>(4)</b>	8' Tables Plastic	<b>\$8.00 each</b>
<b>(8)</b>	Wood Farm Tables (96" x 40")	<b>\$25.00 each</b>
<b>(30)</b>	60" Round Tables (seats up to 10 guests per table)	<b>\$10.00 each</b>
<b>(19)</b>	48" Round Cocktail Tables (seats up to 7 guests per table)	<b>\$10.00 each</b>
<b>(1)</b>	Sweetheart Table (seats up to 2 guests)	<b>\$10.00</b>
<b>(300)</b>	White Padded Resin Folding Chairs	<b>\$1.00 each</b>
<b>(2)</b>	Wood High Chairs	<b>\$10.00 each</b>
<b>(12)</b>	Small 12" Metal Dinos	<b>\$2.00 each</b>
<b>(13)</b>	Medium 18 ½" Metal Dinos	<b>\$2.50 each</b>
<b>(3)</b>	Large 24" – 27" Metal Dinos	<b>\$3.00 each</b>
<b>(2)</b>	Metal Easels	<b>\$10.00 each</b>
<b>(18)</b>	Wireless up lights (32 different colors)	<b>\$20.00 each</b>
<b>(1)</b>	8' x 8' Stage ( 4' x 4' Panels)	<b>\$400.00</b>
<b>(1)</b>	Rooftop PA System with Microphone	<b>\$250.00</b>
<b>(1)</b>	Atrium Projection	<b>\$250.00</b>
<b>(1)</b>	Lucite Podium	<b>\$50.00</b>
<b>(1)</b>	Wood Podium	<b>\$50.00</b>



## Set-up Instructions

SDNHM Special Events will help design a floor diagram to help in visualizing the event set-up expectations. Vendor can only begin set-up at the time given by SDNHM Events Department. Set-up & strike windows may vary based on event needs. A standard 2-hour set-up window will be given for event space. A standard 1-hour post-event strike/clean-up is given for vendors.

<b>Level 1:</b> Atrium available after 3:15 PM
<b>Levels 2,3, &amp; 4:</b> Main Exhibit space after 5 PM
<b>Rooftop:</b> Anytime upon request or 3:15 PM



### SDNHM Equipment:

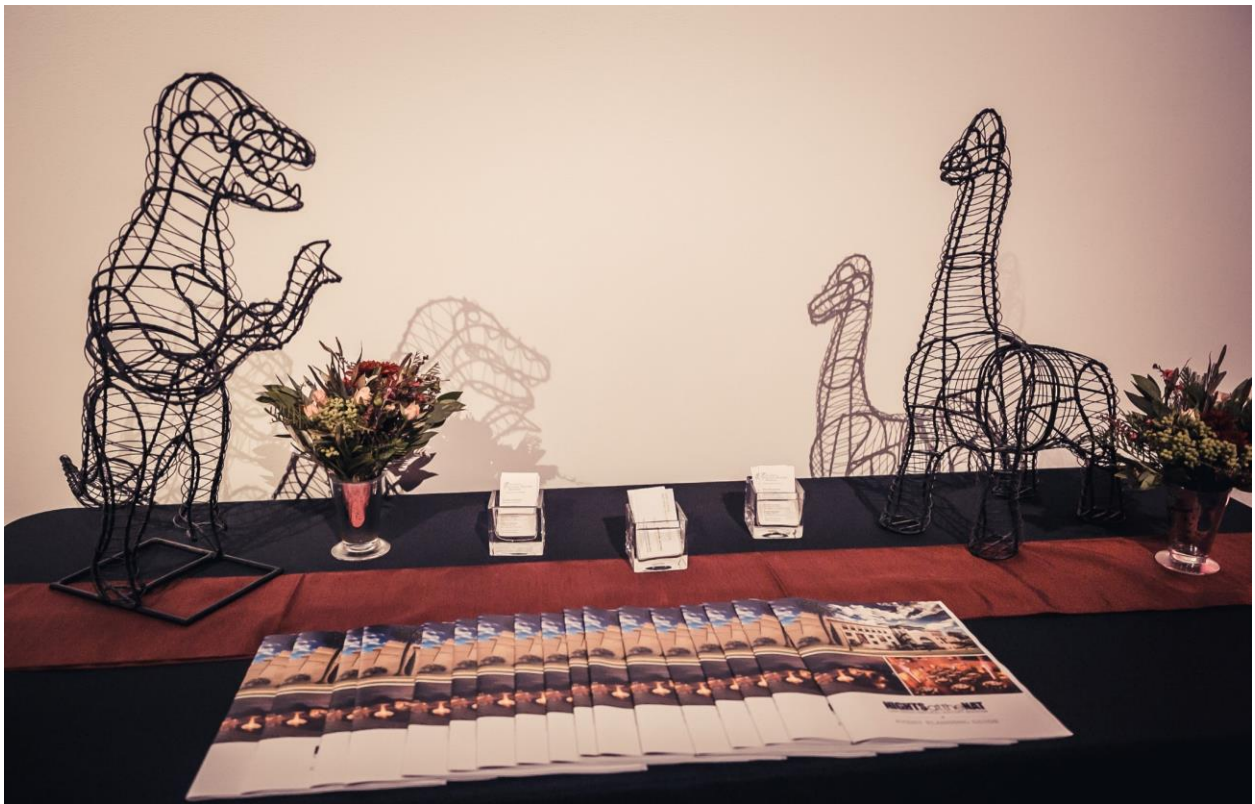


## SDNHM Stage and Lucite Podium:





## SDNHM Tables & Metal Dinos:



## SDNHM Chairs:





## SDNHM High Top & Cocktail Tables, Heaters:



## SDNHM Farm Tables:





