

San Diego Museum of Art Social Story

A guide to help prepare individuals with autism for a museum visit



About the San Diego Museum of Art

Things to Do Before You Go

Take care of your personal needs:

- Make sure to bring water, snack, sunglasses, phone, wallet with your ID, your Explorer Pass if you have one and any fidgets, headphones, or other comfort tools
- Communicate about your visit with your family
- Prepare for social engagement, create a social script for engaging with people who sell tickets to the museum or work in the galleries
- Call ahead to ask about peak hours/Free Tuesday
- Information on the website can inform you before you go about any potential sensory issues
- If you have a service dog, create a social script to answer questions about your dog

Plan your transportation to and from the museum

- Plan on where to park
- Find a map of Balboa Park so that you can find the museum from where you park. Maps are available online or at the Balboa Park Visitors Center

The exhibitions are always changing, so check on the website before you visit to find out what is on display.

San Diego Museum of Art
1450 El Prado
Balboa Park
San Diego, California 92101
(619) 232-7931
sdmart.org

The San Diego Museum of Art is a big building on the Plaza de Panama in Balboa Park. Look for signs telling you that you have arrived.



There is an accessibility ramp to the right of the entrance.



Check in with staff at either of the two desks inside the entrance.

Show the staff member your Balboa Park Explorer Pass, if you have one.

Now is also a good time to ask staff where photography is, and is not, allowed throughout the museum. This can change depending on the exhibition, so it's a good idea to ask.

Flash photography is never allowed in the museum.



Once you have paid admission or shown your pass, you will get a sticker. Wear it someplace visible so that museum staff can see that you have paid to come in.



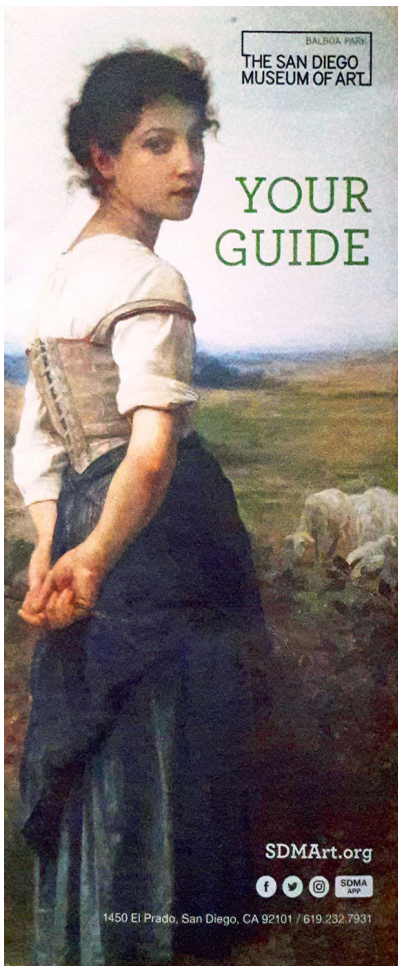
If you brought a backpack, food or drink, a selfie stick, or an umbrella, you will need to check it at the coat check. Talk to a staff member at the desk. They will check your item and give you a claim tag with a number.





Purses and shoulder bags are OK to carry in the museum—just make sure to carry your purse on one shoulder, close to your body.

Why are purses OK to carry in the museum and backpacks are not? Because you can easily bump into the art with a backpack without meaning to. The museum wants you to be able to look at the art, but they need to protect it, too.



There are maps of the museum available at the front desks. The galleries are numbered, both on the map and above the doors to each gallery. You can use the numbers to plan your visit and decide which galleries you would like to see.



Restrooms are located through the arched doorways on either side of the stairs.

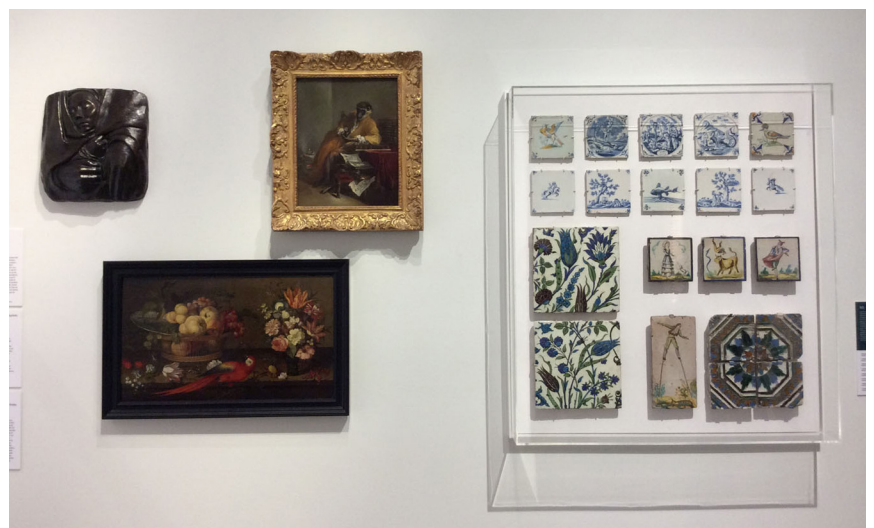


The museum has two floors. You can take the stairs to the second floor, or use the elevator to the left of the stairs. (If the elevator is crowded, you can wait until it comes back down.)



You can visit the galleries in any order you like.

You will see all types of art from all over the world and different time periods, both older and more recent.





You will see attendants dressed in black stationed around the museum. You can tell who they are because they are wearing name tags. They are there to help protect the art from being damaged, but they can also answer your questions.



The museum wants you to be able to look at the art up close, so some of it is out in the open. But even though it may seem like you can touch the art, it is very important not to, because touching can damage it.



But, there may be some objects that it is OK to touch. You will need to read the labels carefully to know when touching is OK. If you do not see a label that says touching is OK, do not touch.



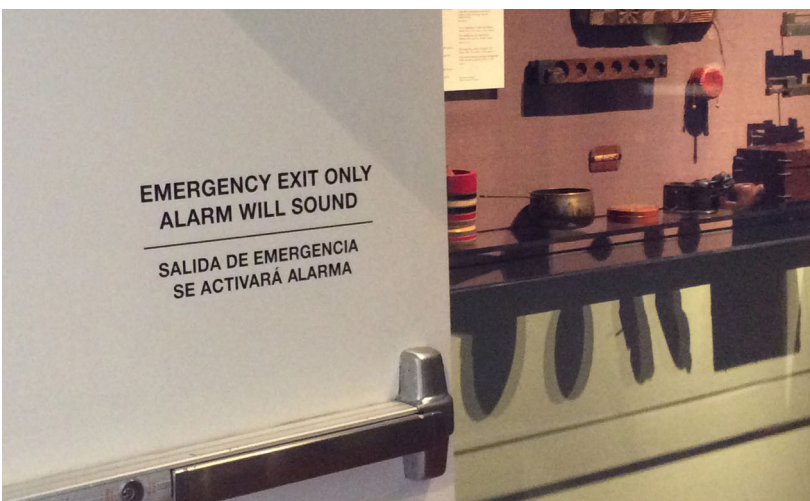
There may be lots of other people moving around the museum looking at the art. Some areas might get crowded where lots of people are trying to look at the same thing. You may have to wait your turn.



If there are lots of people at the museum, some areas can be loud because sound can echo in the large galleries and the main atrium.



There are quiet spaces and places to sit in Gallery 10, Gallery 12, Gallery 13, and next to the Museum Store. (Check your map to find the gallery numbers.)



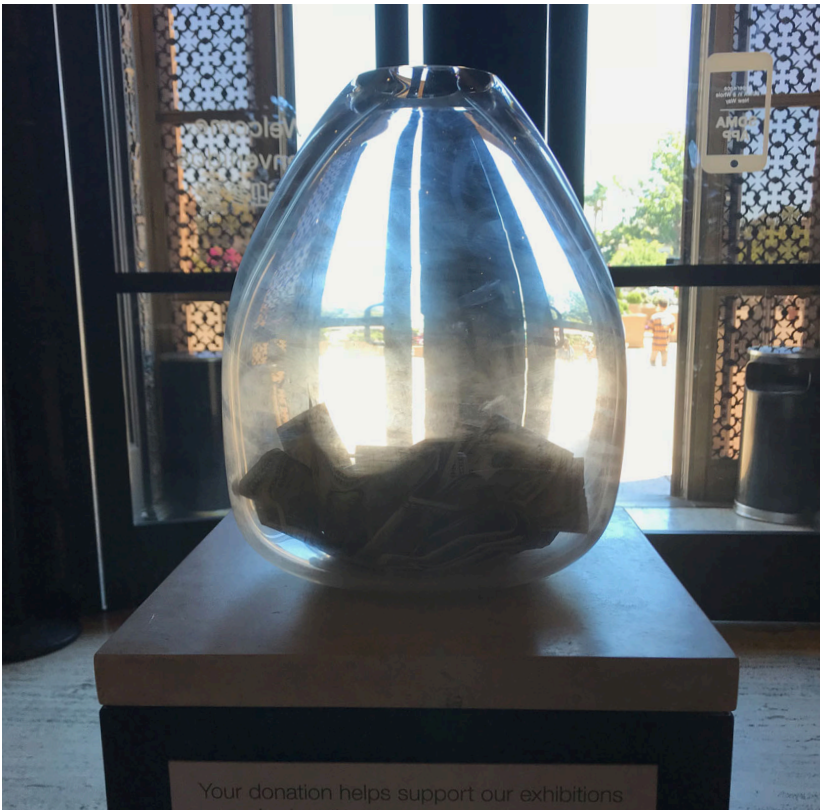
Do not walk through doors marked "Emergency Exit Only" if they are closed. If the doors are already open, it is OK to go through.



To exit the museum, go through the same doors you came through to enter. Remember to find your group before you leave.

If you'd like to visit the Museum Store before you go, it is to the right of the exit.





There is a donation box at the exit if you'd like to make a cash donation to the museum. (You do not have to make a donation.)



It may be bright outside and your eyes may need to adjust.



Outside, you can visit the museum's outdoor restaurant, called Panama 66, and the Sculpture Court & Garden.

You need to walk through the restaurant to get to the Sculpture Court & Garden.





Touching or climbing on the sculptures is not allowed, but the garden is a peaceful space to rest and relax.



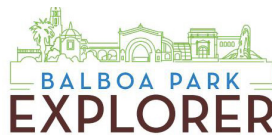
This image shows a blank sheet of white paper with horizontal ruling lines. The lines are evenly spaced and run across the width of the page. There are no margins, text, or other markings on the paper.



Funded by:



Supported by:



This social story was created by a team of young adults with autism.
Thank you to Joel A., Zoe B., David B., Davis H., Austin J., Naomi J.,
Bella L., Terrence P., Nate P., and Charlie Q. for your hard work.

2018