

# Fleet Science Center Social Story

A guide to help prepare individuals with autism for a museum visit



# About the Fleet Science Center

The mission of the Fleet Science Center is to connect people of all ages to the possibilities and power of science to create a better future.

The Fleet Science Center hosts exhibitions and films that focus on science.

## Things to Do Before You Go

Take care of your personal needs:

- Make sure to bring water, snack, sunglasses, phone, wallet with your ID, your Explorer Pass if you have one and any fidgets, headphones, or other comfort tools
- Communicate about your visit with your family
- Prepare for social engagement, create a social script for engaging with people who sell tickets to the museum or work in the galleries
- Call ahead to ask about peak hours/Free Tuesday
- Information on the website can inform you before you go about any potential sensory issues
- If you have a service dog, create a social script to answer questions about your dog

Plan your transportation to and from the museum

- Plan on where to park
- Find a map of Balboa Park so that you can find the museum from where you park. Maps are available online or at the Balboa Park Visitors Center

The exhibitions are always changing, so check on the website before you visit to find out what is on display. You can go to their website at [www.rhfleet.org](http://www.rhfleet.org). There you can find directions and parking information, IMAX movie times, current events, and exhibitions. The exhibitions at the Science Center sometimes change, so if you've been there before, remember that you might not see all of the same things that you saw last time. Some of the exhibits and interactives they have on display include video, harsh lights, or sound interactives.

Fleet Science Center  
1875 El Prado  
Balboa Park  
San Diego, California 92101  
(619) 238-1233  
[rhfleet.org](http://rhfleet.org)





The Fleet Science Center is a big building next to a fountain in Balboa Park.





Signage on the door tells you that this is the right building and shows the hours when the Fleet Science Center is open.



Once you get inside, stand in line to get your ticket. It could be crowded, so you might have to wait for several minutes. To get your ticket, talk to a staff member at the admissions desk.







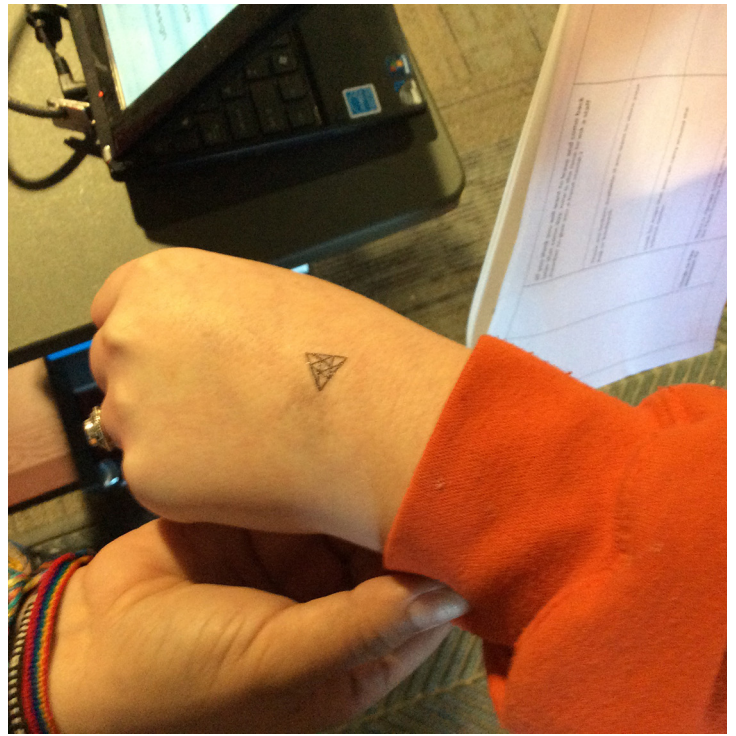
If you have a Balboa Park Explorer Pass, staff will scan it for you.

After you get your ticket, the entrance is on your right. Look for the sign up above.





Show your ticket to the ticket-taker as you enter the exhibit galleries. (If you think you will want to leave and come back later that same day, now is the time to ask a staff member to give you a hand stamp.)







There are lockers available if you want to store your bag or backpack.



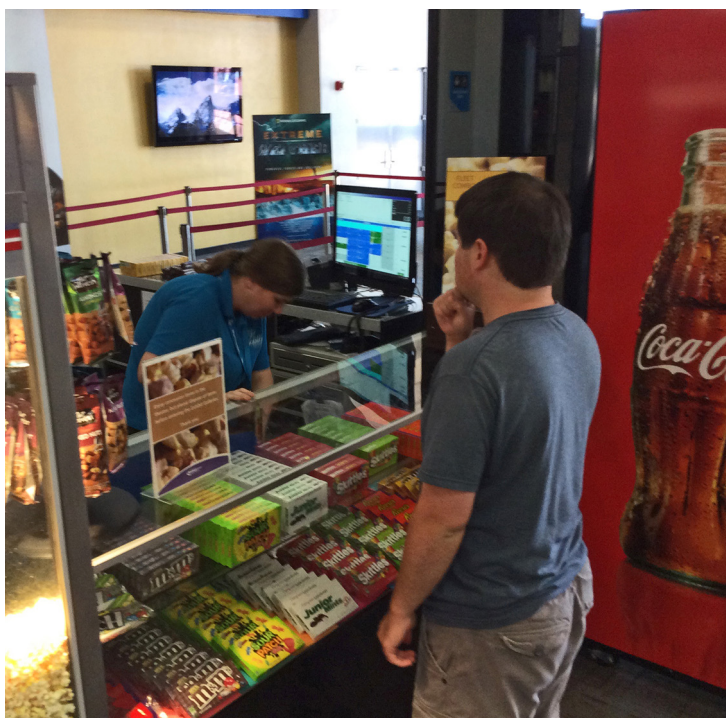
Look for maps that you can carry around the Science Center.





Yes, it's OK to use your phone to take photos. Flash is OK, too.

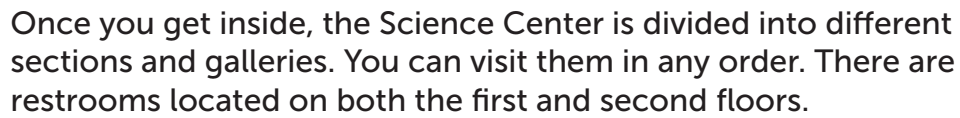




You can buy food to eat in the Craveology café and eat it at the outdoor seating area. You can also buy food to eat while you watch an IMAX movie.

(But aside from these areas, remember that no food or drinks are allowed inside the Fleet Science Center.)









There are lots of exhibits and things to touch and discover.







You can visit the Tinkering Studio. You can visit Kid City if you are with a child age five or younger. (Kid City can sometimes be noisy and crowded.)







You can see an IMAX movie in the Dome Theater. (Before you buy a movie ticket, you should know that the movies are loud, with bright visuals and movements.)





Expect different light levels in different areas—some areas are bright, and some are darker. It could be noisy and crowded, especially in the exhibits near the front of the science center on the first floor. There are lots of exhibits that make noise, and there might be excited kids.



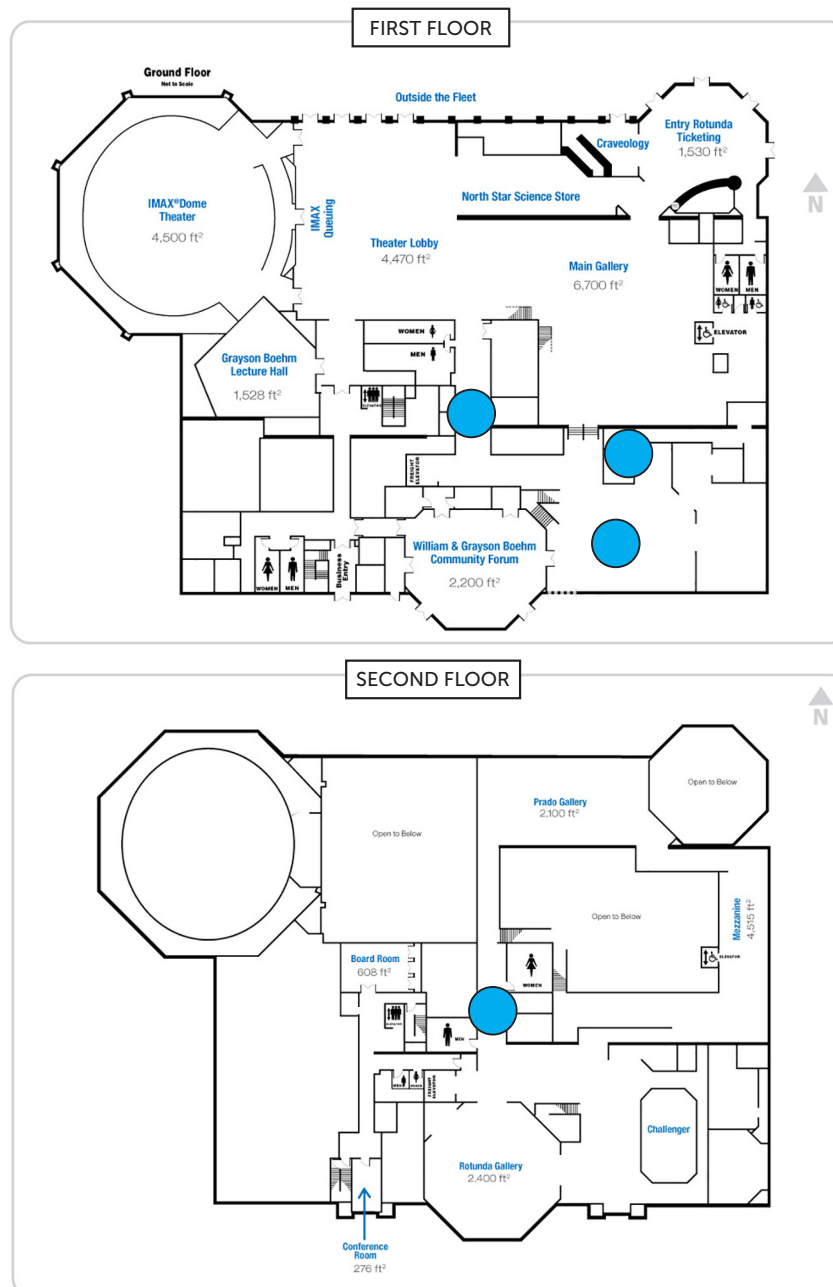




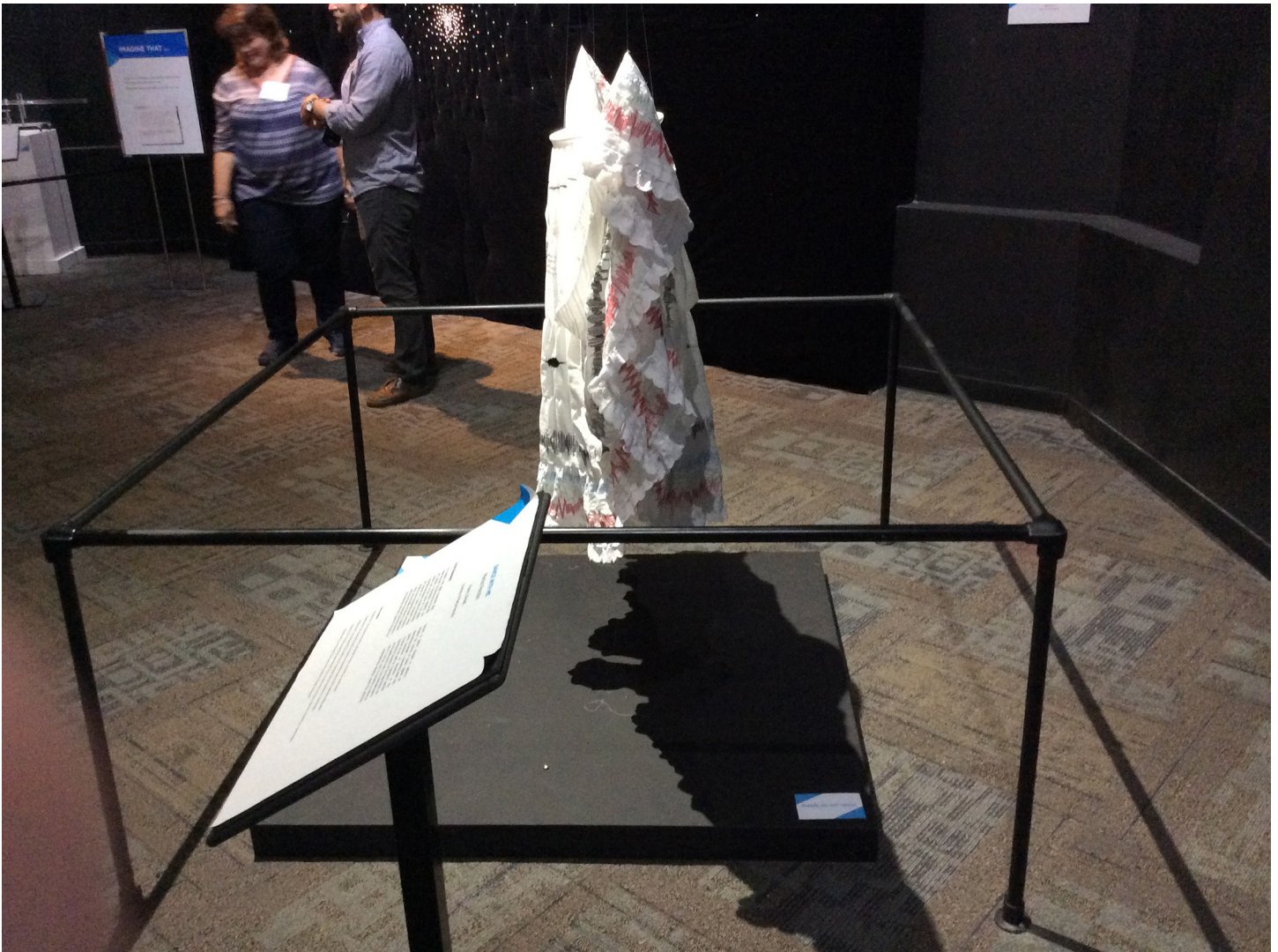
If you need a quiet space to take a break, try:

- The cell biology exhibits towards the back of the science center on the 1st floor.
- The hallway near the lockers on the 1st floor.
- The area near the elevators outside the Tinkering Studio on the 1st floor.
- The hallway near the restrooms on the 2nd floor.

● = Quiet Space







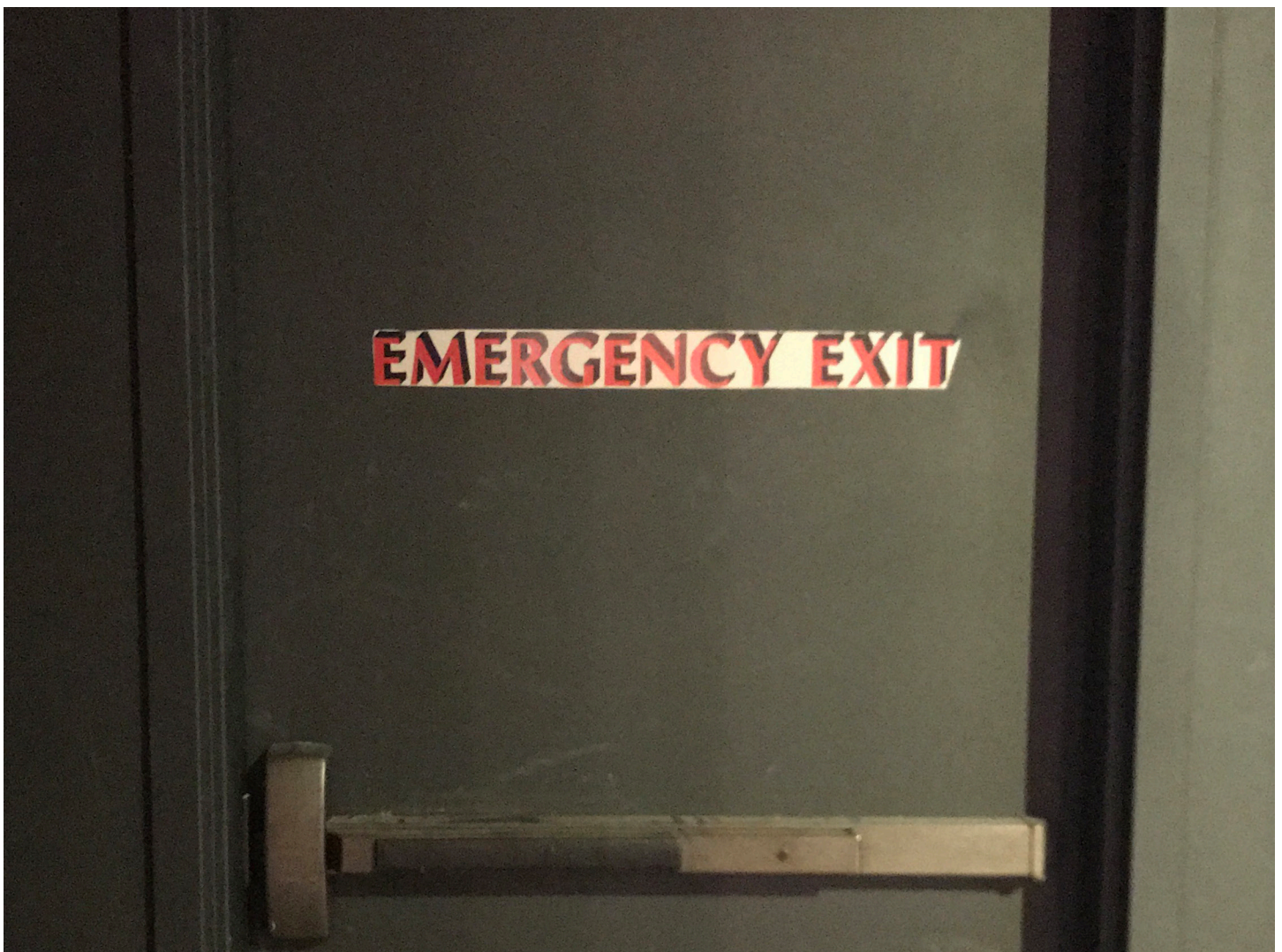
It is OK to touch everything, unless it is roped off or it is labeled "Please do not touch."







Do not go through doors with signs that say "Staff Only" or "Emergency Exit" unless there is an emergency and staff tells you to do so.

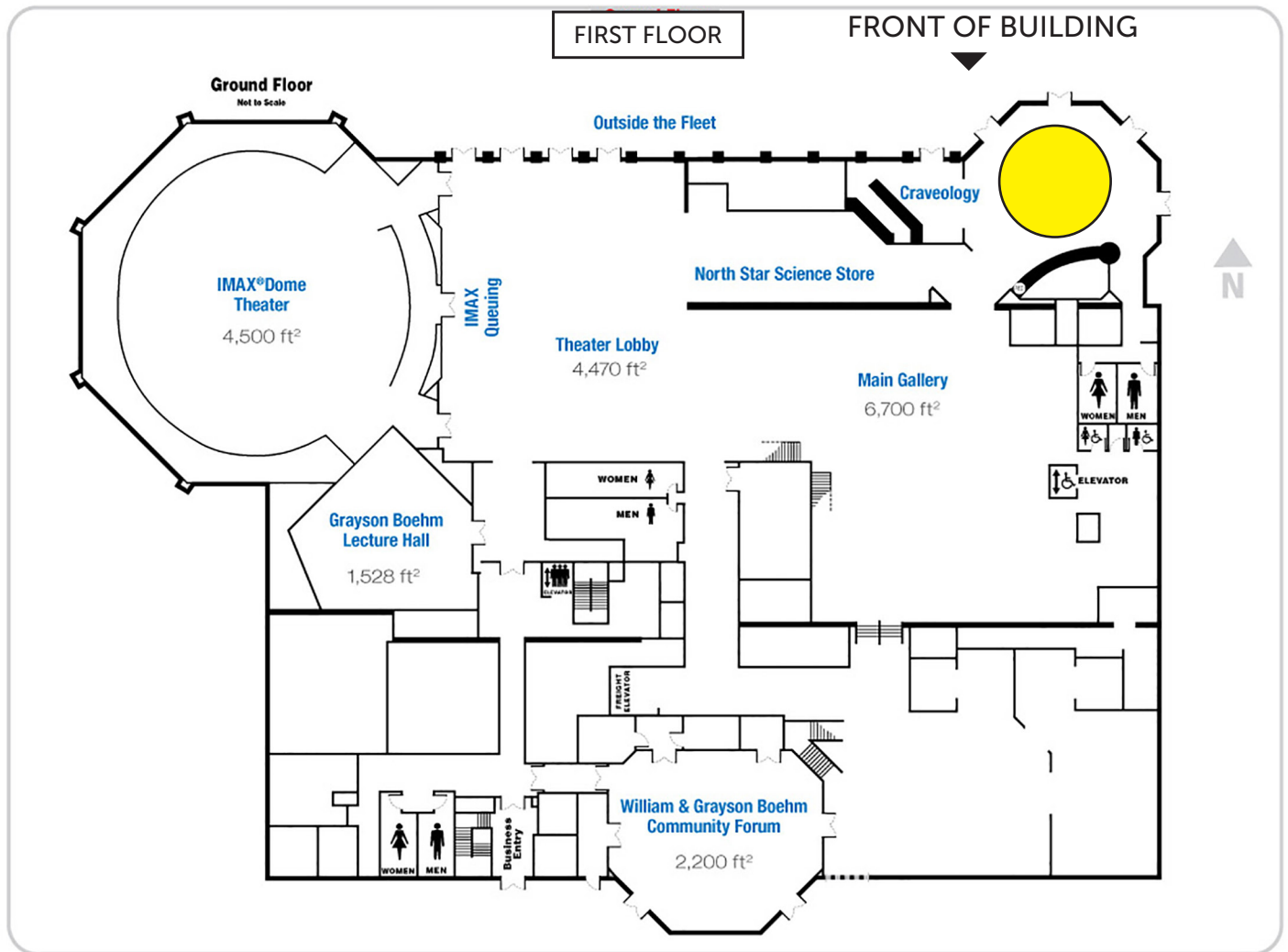






When you are ready to leave, find your group. If you have put something in a locker, remember to get it.





The exit and entrance are both at the front of the building.





To find the exit, you have to go through the North Star Science Gift Shop. Look for the green “Exit” signs.

Don’t go through the alarmed emergency exit.









## This image shows a single sheet of white paper with horizontal ruling lines. The lines are evenly spaced and run across the width of the page. There are no margins, text, or other markings on the paper.

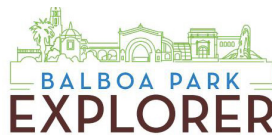




Funded by:



Supported by:



This social story was created by a team of young adults with autism.  
Thank you to Joel A., Zoe B., David B., Davis H., Austin J., Naomi J.,  
Bella L., Terrence P., Nate P., and Charlie Q. for your hard work.

2018