



2015-2016 WINTER CAMP INFORMATION

Before Camp Begins:

- Please submit the Camper Release Form and Camper Medical History/Emergency Release Form as soon as possible. You may fill out the form online, fax to 619.235.9446, email as an attachment to education@sdnhm.org, or mail to Education Department, San Diego Natural History Museum, P. O. Box 121390, San Diego, CA 92112.
- Camps are held in the Learning Labs at the San Diego Natural History Museum located at 1788 El Prado, Balboa Park, San Diego, CA 92101 (map below).
- Our winter camps are organized by your child(ren)'s current grade level. To ensure a high-quality experience, it is important that all participants are with their same-aged peers (grades 1-2 or 3-5).

Check In and Pick Up:

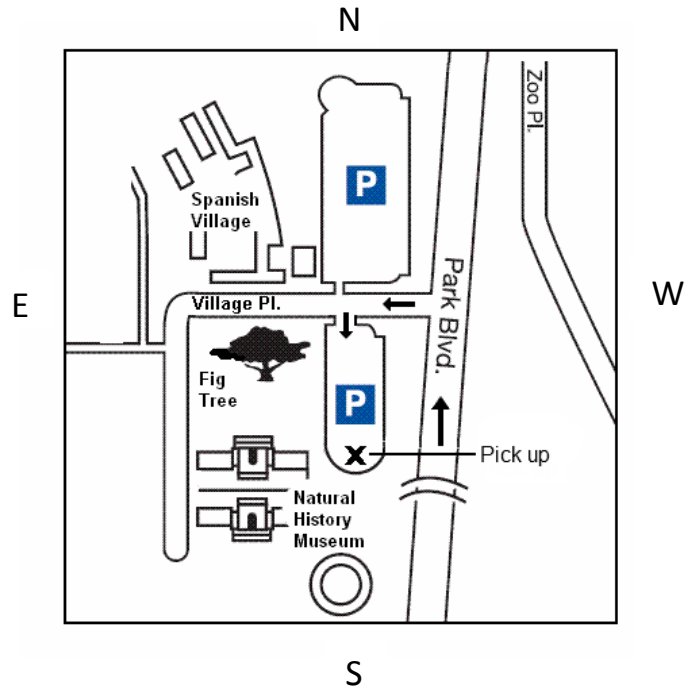
- Parking is free in Balboa Park, but can be difficult during the holidays. Please allow ample time to find a parking space for drop-off, and remember to lock your vehicle.
- To check in, please walk your child into the Museum via the north entrance (by the giant fig tree) 10-15 minutes prior to the start of camp and check in at the classroom. You will have the opportunity to meet the camp instructor.
- Pick up your child at the south end of the parking lot on the east side of the Museum (the end closest to the fountain in the lot directly to your left when you turn onto Village Place from Park Boulevard). You can pull up to the curb and do not need to find parking. Please pull up as far as you are able to along the curb, to allow for a smooth flow of traffic. Exit your vehicle and sign your child out at the table. You will need your photo ID. Refer to the maps included below.

All Camps:

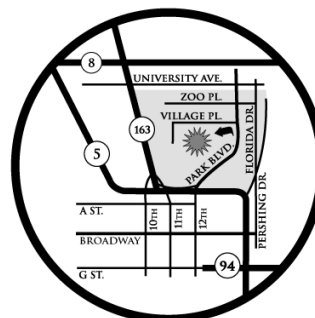
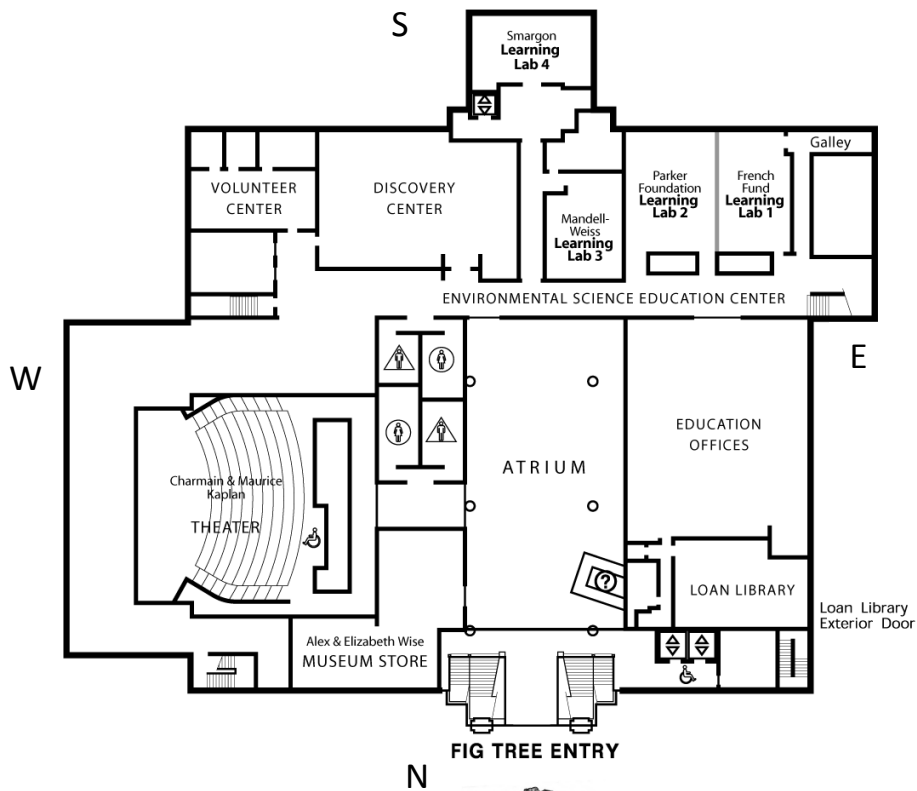
- All campers break for lunch and a snack. Lunches and snacks are not provided. Please provide lunch, a snack, and a beverage for your child daily. Please write a name on his/her lunch bag and beverage container. **Note: Winter Camp at theNAT is nut-free.**
- Please list all allergies (especially food allergies) on the Camper Release Medical History/Emergency Release Form.
- Children should wear comfortable play clothes that can get dirty. Closed-toe shoes only.
- All camps will visit the Museum exhibitions and spend time out in the Park. We recommend hats, jackets, and sunscreen.
- IDs are required at pick up each day. Please be sure to list the person(s) picking up your child on the Camper Release Form
 - by the name listed on their ID.
- Please be prompt in dropping off and picking up your child.
 - The Museum doors are locked 10 minutes after camp starts each day.
 - If you are running late or will be absent, please call Customer Service at 877.946.7797.
 - If you are more than 15 minutes late for pick-up, a \$10 late fee will apply.
- For additional information, please refer to the FAQ.

PARK MAP

For more detailed directions, visit sdnat.org/directions.



EDUCATION MAP 1st FLOOR



SAN DIEGO NATURAL HISTORY MUSEUM
1788 El Prado, San Diego, CA 92101